



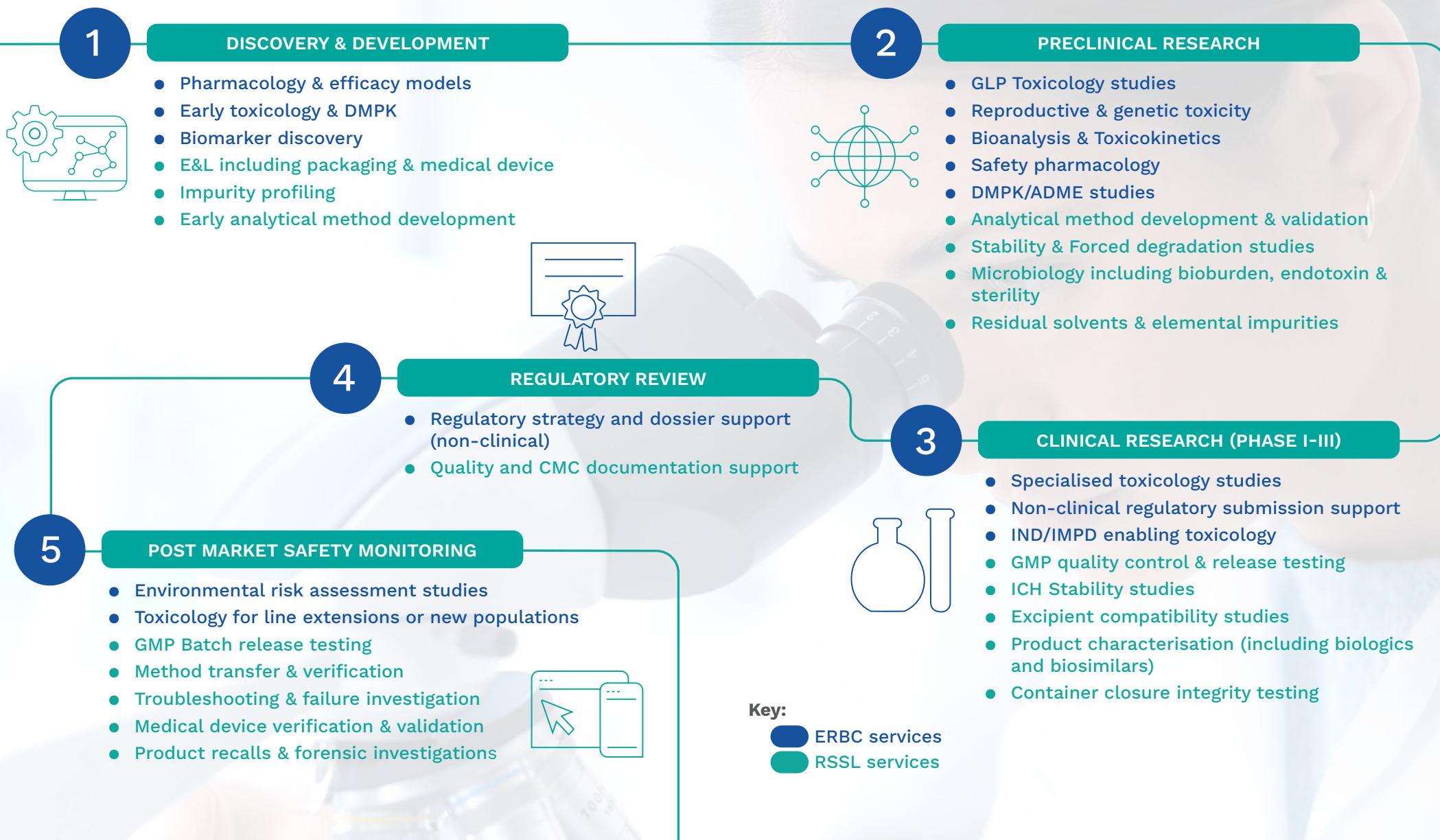
Preclinical insight.
Analytical excellence.
Complete solutions.



Simplify your path to market with a single, science-driven partner.

The RSSL-ERBC European partnership gives you streamlined access to expert preclinical, analytical and regulatory support – reducing handoffs, accelerating timelines and cutting risk.

Whether you're a start-up or global pharma, our joined-up approach means faster decisions, fewer delays and stronger data to support every stage of your molecule's journey.



Meet your partners



Preclinical experts

ERBC is a European preclinical CRO specialised in safety assessment, pharmacokinetics and translational research. With extensive expertise in toxicology (including safety pharmacology, reproductive & juvenile toxicology and genotoxicology), as well as in vitro, in vivo and in silico models, ERBC supports pharmaceutical, biotech, and medtech companies in de-risking their development programs and accelerating time to market.

Jack Armstrong

Business Development Manager

✉ jarmstrong@erbc-group.com

☎ +44 (0)7783 008 150

🌐 www.erbc-group.com



Analytical excellence

RSSL is a global analytical MHRA and FDA approved CRO with over 35 years of experience in delivering GMP-compliant analytical, regulatory and investigational services. Trusted by clients in over 70 countries, RSSL offers a diverse range of biological, microbiological, chemical and physical analytical services across all phases of drug development. RSSL is known for scientific rigor, flexibility and expertise from discovery to release and beyond.

Jette Cowan

Head of Commercial Life Sciences

✉ Jette.Cowan@rssl.com / lifesciencesales@rssl.com

☎ +44 (0)118 918 4248

🌐 www.rssl.com